

Brilliant Violet 605™/ Brilliant Violet 650™ beta test results

T cell Activation Panel in Rhesus Macaque

11-0013-00

Toll-Free Tel: (US & Canada): 1.877.BIOLEGEND (246.5343)

Tel: 858.768.5800

biolegend.com

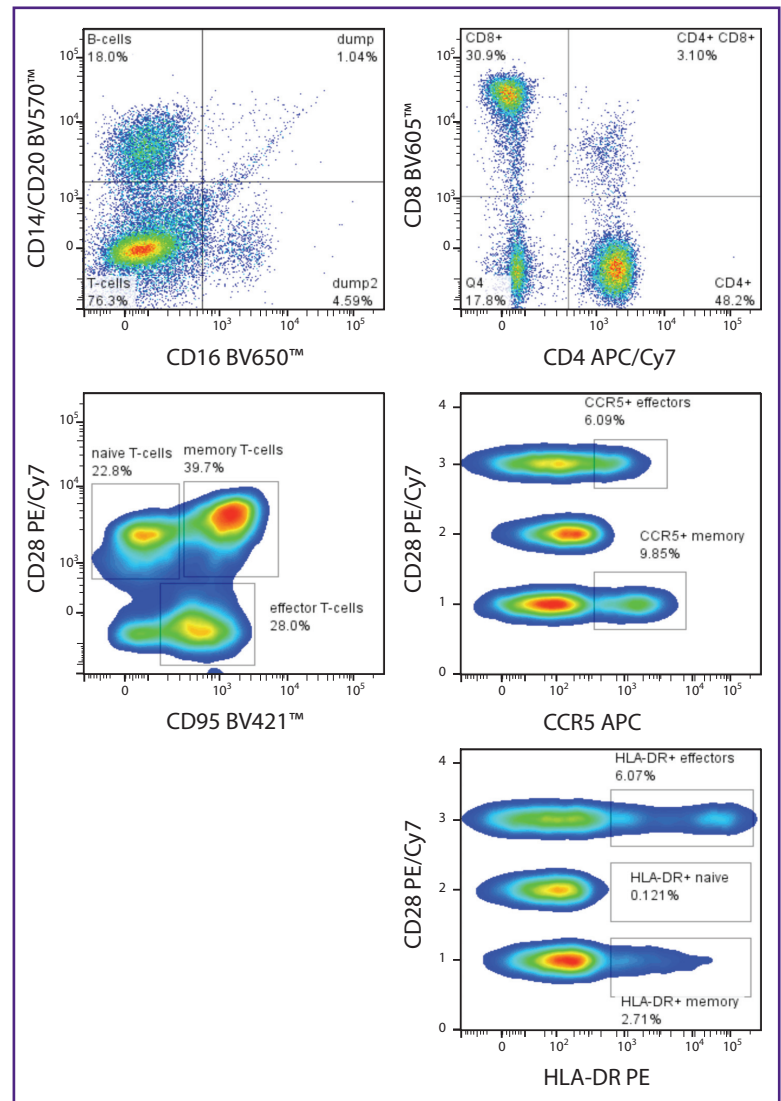
Cat. No.	Description	Clone
301039	Brilliant Violet 605™ anti-human CD8a	RPA-T8
302041	Brilliant Violet 650™ anti-human CD16	3G8

Brilliant Reactivity

Rhesus macaque is a common model for immune studies in response to pathogens. In this panel, T-cell activation was assessed in a variety of subsets. A 12 color flow panel was run on an LSRII (405, 488, and 633 nm lasers). On gated lymphocytes, dead cells were excluded, as well as CD16 BV650™ and CD14 and CD20 BV570™. From the enriched population, T cells were phenotyped into naïve, effector and memory subsets on the total T cell population, as well as broken into CD4+ and CD8+ selective populations by gating on CD28 and CD95. Naïve T cells are CD28+/CD95-, memory are CD28+/CD95+, and effector T cells are CD28-/CD95+. Each T cell subset was then assessed for the degree of expression of activation markers such as CCR5, HLA-DR, CCR7 and proliferation status with Ki-67.

Panel

Fluorophore	Specificity
BV570™	CD14/CD20
BV421™	CD95
BV605™	CD8a
BV650™	CD16
PE	HLA-DR
PE/Cy7	CD28
FITC	CCR7
PerCP/Cy5.5	Ki67
APC	CCR5
Alexa Fluor® 700	CD3
APC/Cy7	CD4
Aqua	Live/Dead



Brilliant Violet™, BV421™, BV570™, BV605™, and BV650™ are trademarks of Sirigen Group Ltd. Alexa Fluor® is a trademark of Molecular Probes, Inc.

Learn more at: biolegend.com/brilliantviolet

WORLD-CLASS QUALITY | SUPERIOR CUSTOMER SUPPORT | OUTSTANDING VALUE