

GMP Ultra-LEAF™ Biotin anti-human HLA-A,B,C SF Antibody

Catalog# / Size	311457 / 100 µg 311458 / 1 mg
Clone	W6/32
Other Names	Major Histocompatibility Class I, MHC class I
Isotype	Mouse IgG2a, κ
Description	MHC class I antigens associated with β2-microglobulin are expressed by all human nucleated cells. MHC class I molecules are involved in presentation of antigens to CD8+ T cells. They play an important role in cell-mediated immune responses and tumor surveillance. GMP Ultra-LEAF™ Biotin anti-human HLA-A,B,C SF Antibody was GMP manufactured under serum-free conditions including serum-free hybridoma cell culture, without additional animal or human-derived materials or preservatives. This antibody contains ultra-low levels of endotoxin (<0.01EU/µg of protein), is filtered through a 0.1 µm membrane, and is tested negative for mycoplasma and microbial growths. GMP Ultra-LEAF™ Biotin anti-human HLA-A,B,C SF Antibody is for research and further <i>ex vivo</i> processing use only

Product Details

Reactivity	Human
Reported Reactivity	African Green, Baboon, Cat, Cow, Chimpanzee, cynomolgus, Rhesus
Antibody Type	Monoclonal
Host Species	Mouse
Formulation	0.1 µm filtered in phosphate-buffered solution, pH 7.2, containing no preservative. Endotoxin level is < 0.01 EU/µg of the protein (< 0.001 ng/µg of the protein) as determined by the LAL test
Preparation	The Ultra-LEAF™ (Low Endotoxin, Azide-Free) antibody was purified by affinity chromatography.
Concentration	1.0 mg/mL
Storage & Handling	The antibody solution should be stored undiluted between 2°C and 8°C. This Ultra-LEAF™ solution contains no preservative; handle under aseptic conditions.
Application	FC - Quality tested Activ, Block, IHC-F, IP, WB - Reported in the literature, not verified in house
Recommended Usage	Each lot of this antibody is quality control tested by immunofluorescent staining with flow cytometric analysis . For flow cytometric staining, the suggested use of this reagent is ≤ 0.5 µg per million cells in 100 µL volume. It is recommended that the reagent be titrated for optimal performance for each application.
Application Notes	Clone W6/32 recognizes residues in the N terminus of the human β2-microglobulin molecule ²¹ . Additional reported applications (for the relevant formats) include: immunoprecipitation ² , Western blotting (non-reducing) ³ , immunohistochemical staining of acetone-fixed frozen tissue sections ^{4,5} , blocking ^{6,7} , inhibition of NK cell-mediated lysis ¹⁰ , and activation ^{8,9} . Clone W6/32 has been reported not to be suitable for immunohistochemistry on paraffin sections ¹⁷ .
Additional Product Notes	This GMP Ultra-LEAF™ Biotin anti-human HLA-A,B,C antibody (Endotoxin < 0.01 EU/µg, Azide-Free, 0.1 µm filtered) is recommended for highly sensitive assays. The antibody was GMP manufactured under serum-free conditions including serum-free hybridoma cell culture, without additional animal or human-derived materials or preservatives. This antibody is intended for flow cytometry and for research or further <i>ex vivo</i> bioprocessing use only.
Application References	1. Darrow TL, <i>et al.</i> 1989. <i>J. Immunol.</i> 142:3329. 2. Stern P, <i>et al.</i> 1987. <i>J. Immunol.</i> 138:1088. 3. Tran TM, <i>et al.</i> 2001. <i>Immunogenetics</i> 53:440.
(PubMed link indicates BioLegend citation)	

4. Barbatis C, *et al.* 1981. *Gut* 22:985.
5. Ayyoub M, *et al.* 2004. *Cancer Immunity* 4:7.
6. DeFelice M, *et al.* 1990. *Cell. Immunol.* 126:420.
7. Fayen J, *et al.* 1998. *Int. Immunol.* 10:1347.
8. Turco MC, *et al.* 1988. *J. Immunol.* 141:2275.
9. Geppert TD, *et al.* 1989. *J. Immunol.* 142:3763.
10. Wooden SL, *et al.* 2005. *J. Immunol.* 175:1383.
11. Nagano M, *et al.* 2007. *Blood* 110:151.
12. McLoughlin RM, *et al.* 2008. *J. Immunol.* 181:1323. [PubMed](#)
13. Takahara M, *et al.* 2008. *J. Leukoc. Biol.* 83:742. [PubMed](#)
14. Lunemann A, *et al.* 2008. *J. Immunol.* 181:6170. [PubMed](#)
15. Laing BJ, *et al.* 2010. *J. Thorac Cardiovasc Surg.* 139:1402. [PubMed](#)
16. Yoshino N, *et al.* 2000. *Exp. Anim. (Tokyo)* 49:97. (FC)
17. Vambutas A, *et al.* 2000. *Clin. Diagn. Lab. Immun.* 7:79.
18. Coppieters KT, *et al.* 2012. *J. Exp. Med.* 209:51. (epitope)
19. Crivello P, *et al.* 2013. *Hum Immunol.* 22:100. [PubMed](#)
20. Jung Y, *et al.* 2015. *Mol Cancer Res.* 13:197. [PubMed](#)
21. Shields MJ, Ribaldo RK. 1998. *Tissue Antigens.* 51(5):567-70. (epitope)

Disclaimer

GMP Ultra-LEAF™ antibodies. BioLegend GMP Ultra-LEAF™ antibodies are manufactured in a dedicated GMP facility and compliant with ISO 13485:2016. For research or *ex vivo* cell processing use. Not for use in diagnostic or therapeutic procedures. Our processes include:

- Batch-to-batch consistency
- Material traceability
- Documented procedures
- Documented employee training
- Equipment maintenance and monitoring records
- Lot-specific certificates of analysis
- Quality audits per ISO 13485:2016
- QA review of released products

BioLegend GMP Ultra-LEAF™ antibodies are manufactured and tested in accordance with USP Chapter 1043, Ancillary Materials for Cell, Gene and Tissue-Engineered Products and Ph. Eur. Chapter 5.2.12

Antigen Details

Structure	Ig superfamily
Distribution	All nucleated cells
Function	Antigen presentation
Ligand/Receptor	CD3/TCR, CD8
Biology Area	Immunology, Innate Immunity
Molecular Family	MHC Antigens
Antigen References	<ol style="list-style-type: none"> 1. Barclay AN, <i>et al.</i> Eds. 1993. <i>The Leukocyte Antigen FactsBook</i>. Academic Press Inc. San Diego.
Gene ID	3105

Related Protocols

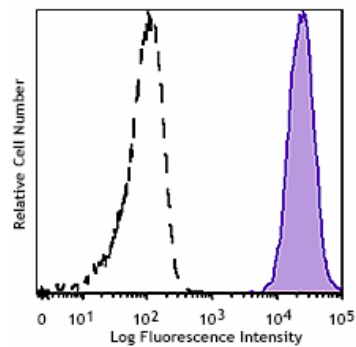
[Cell Surface Flow Cytometry Staining Protocol](#)

Other Formats

APC anti-human HLA-A,B,C, FITC anti-human HLA-A,B,C, PE anti-human HLA-A,B,C, PE/Cyanine5 anti-human HLA-A,B,C, Purified anti-human HLA-A,B,C, Alexa Fluor® 488 anti-human HLA-A,B,C, Alexa Fluor® 647 anti-human HLA-A,B,C, Pacific Blue™ anti-human HLA-A,B,C, PerCP anti-human HLA-A,B,C, APC/Cyanine7 anti-human HLA-A,B,C, PerCP/Cyanine5.5 anti-human HLA-A,B,C, Ultra-LEAF™ Purified anti-human HLA-A,B,C, PE/Cyanine7 anti-human HLA-A,B,C, Brilliant Violet 510™ anti-human HLA-A,B,C, Alexa Fluor® 700 anti-human HLA-A,B,C, PE/Dazzle™ 594 anti-human HLA-A,B,C, Biotin anti-human HLA-A,B,C, Brilliant Violet 605™ anti-human HLA-A,B,C, APC/Fire™ 750 anti-human HLA-A,B,C, TotalSeq™-A0058 anti-human HLA-A,B,C, TotalSeq™-

C0058 anti-human HLA-A,B,C, TotalSeq™-B0058 anti-human HLA-A,B,C, Spark NIR™ 685 anti-human HLA-A,B,C, TotalSeq™-D0058 anti-human HLA-A,B,C

Product Data



Human peripheral leukocytes were stained with GMP Ultra-LEAF™ Biotin anti-human HLA-A,B,C SF antibody (clone W6/32) (filled histogram) or isotype control (clone MOPC-173) (open histogram) followed by FITC Streptavidin stain.

For research and *ex vivo* cell processing use. Not for diagnostic or therapeutic procedures. Not for resale. BioLegend will not be held responsible for patent infringement or other violations that may occur with the use of our products.

*These products may be covered by one or more Limited Use Label Licenses (see the BioLegend Catalog or our website, www.biolegend.com/terms). BioLegend products may not be transferred to third parties, resold, modified for resale, or used to reverse engineer functionally similar materials without written approval of BioLegend. By use of these products you accept the terms and conditions of any and all applicable Limited Use Label Licenses. Unless otherwise indicated, these products are for research and *ex vivo* cell processing use only and not intended for human or animal diagnostic or therapeutic use.

8999 BioLegend Way, San Diego, CA 92121 www.biolegend.com
Toll-Free Phone: 1-877-Bio-Legend (246-5343) Phone: (858) 768-5800 Fax: (877) 455-9587